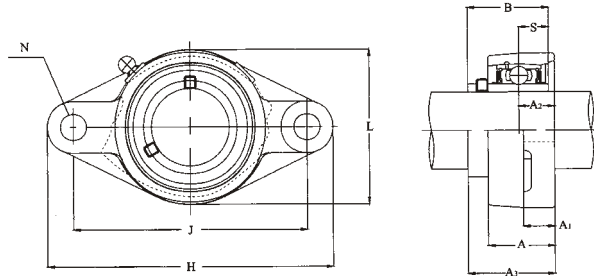
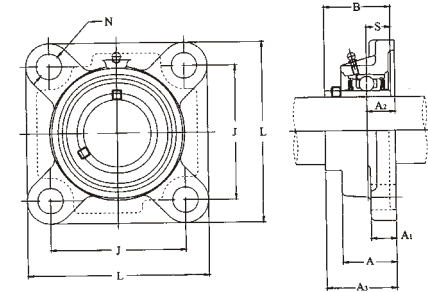




DIAMOND FLANGED UNITS



SQUARE FLANGED UNITS



131

Shaft Diameter (mm)	UNIT Number	Dimensions (mm)										Weight kg
		H	L	A	J	A1	A2	N	A3	B	S	
12	UCFL201	113	60	25.5	90	12	15	12	33.3	31.0	12.7	0.51
15	UCFL202	113	60	25.5	90	12	15	12	33.3	31.0	12.7	0.49
17	UCFL203	113	60	25.5	90	12	15	12	33.3	31.0	12.7	0.48
20	UCFL204	113	60	25.5	90	12	15	12	33.3	31.0	12.7	0.46
25	UCFL205	130	68	27.0	99	14	16	16	35.7	34.0	14.3	0.63
30	UCFL206	148	80	31.0	117	14	18	16	40.2	38.1	15.9	0.95
35	UCFL207	161	90	34.0	130	16	19	16	44.4	42.9	17.5	1.31
40	UCFL208	175	100	36.0	144	16	21	16	51.2	49.2	19.0	1.69
45	UCFL209	188	108	38.0	148	18	22	19	52.2	49.2	19.0	2.10
50	UCFL210	197	115	40.0	157	18	22	19	54.6	51.6	19.0	2.40
55	UCFL211	224	130	43.0	184	20	25	19	58.4	55.6	22.2	3.40
60	UCFL212	250	140	48.0	202	20	29	23	68.7	65.1	25.4	4.30
65	UCFL213	258	155	50.0	210	24	30	23	69.7	65.1	25.4	5.40
70	UCFL214	265	160	54.0	216	24	31	23	75.4	74.6	30.2	6.30
75	UCFL215	275	165	56.0	225	24	34	23	78.5	77.8	33.3	6.90
80	UCFL216	290	180	58.0	233	24	34	25	83.3	82.6	33.3	8.40
85	UCFL217	305	190	63.0	248	26	36	25	87.6	85.7	34.1	9.90
90	UCFL218	320	205	68.0	265	26	40	25	96.3	96.0	39.7	12.40

132

Shaft Diameter (mm)	UNIT Number	Dimensions (mm)										Weight kg
		L	A	J	A1	A2	N	A3	B	S		
12	UCF201	86	25.5	64	12	15	12	33.3	31.0	12.7	0.67	
15	UCF202	86	25.5	64	12	15	12	33.3	31.0	12.7	0.66	
17	UCF203	86	25.5	64	12	15	12	33.3	31.0	12.7	0.64	
20	UCF204	86	25.5	64	12	15	12	33.3	31.0	12.7	0.62	
25	UCF205	95	27.0	70	14	16	12	35.7	34.1	14.3	0.83	
30	UCF206	108	31.0	83	14	18	12	40.2	38.1	15.9	1.14	
35	UCF207	117	34.0	92	16	19	14	44.4	42.9	17.5	1.47	
40	UCF208	130	36.0	102	16	21	16	51.2	49.2	19.0	2.00	
45	UCF209	137	38.0	105	18	22	16	52.2	49.2	19.0	2.40	
50	UCF210	143	40.0	111	18	22	16	54.6	51.6	19.0	2.60	
55	UCF211	162	43.0	130	20	25	19	58.4	55.6	22.2	3.60	
60	UCF212	175	48.0	143	20	29	19	68.7	65.1	25.4	4.80	
65	UCF213	187	50.0	149	20	30	19	69.7	65.1	25.4	5.80	
70	UCF214	193	54.0	152	24	31	19	75.4	74.6	30.2	6.60	
75	UCF215	200	56.0	159	24	34	19	78.5	77.8	33.3	7.70	
80	UCF216	208	58.0	165	24	34	23	83.3	82.6	33.3	8.20	
85	UCF217	220	63.0	175	26	36	23	87.6	85.7	34.1	9.60	
90	UCF218	235	68.0	187	26	40	23	96.3	96.0	39.7	12.10	

